

A photograph of a large fire station garage. In the background, a red fire engine is parked. To the right, a red Scania truck is parked near an open bay door. The floor is covered in a multi-colored resin flooring with large yellow, black, and red sections. The ceiling has exposed steel beams and fluorescent lights.

# PUBLIC SECTOR

Resin Flooring Solutions



Public Sector facilities usually have very short refurbishment timeframes and are monitored by strict budgets.

Understanding the operating processes of the facility, combined with refurbishment timescales and budgets will help to indicate what flooring solution is most suitable.

RESYN provides aesthetic, durable, hygienic, slip resistant resin flooring solutions, ideally suited for public sector environments. Whilst we offer a range of internal and external resin systems, we specialise in the installation of MMA resin flooring solutions which are favourable when undertaking refurbishments, particularly where minimal downtime is required.

With extensive experience within this industry, we work closely with our customers to ensure they receive high quality, resin flooring solutions that last and with minimal disruption to operating procedures.

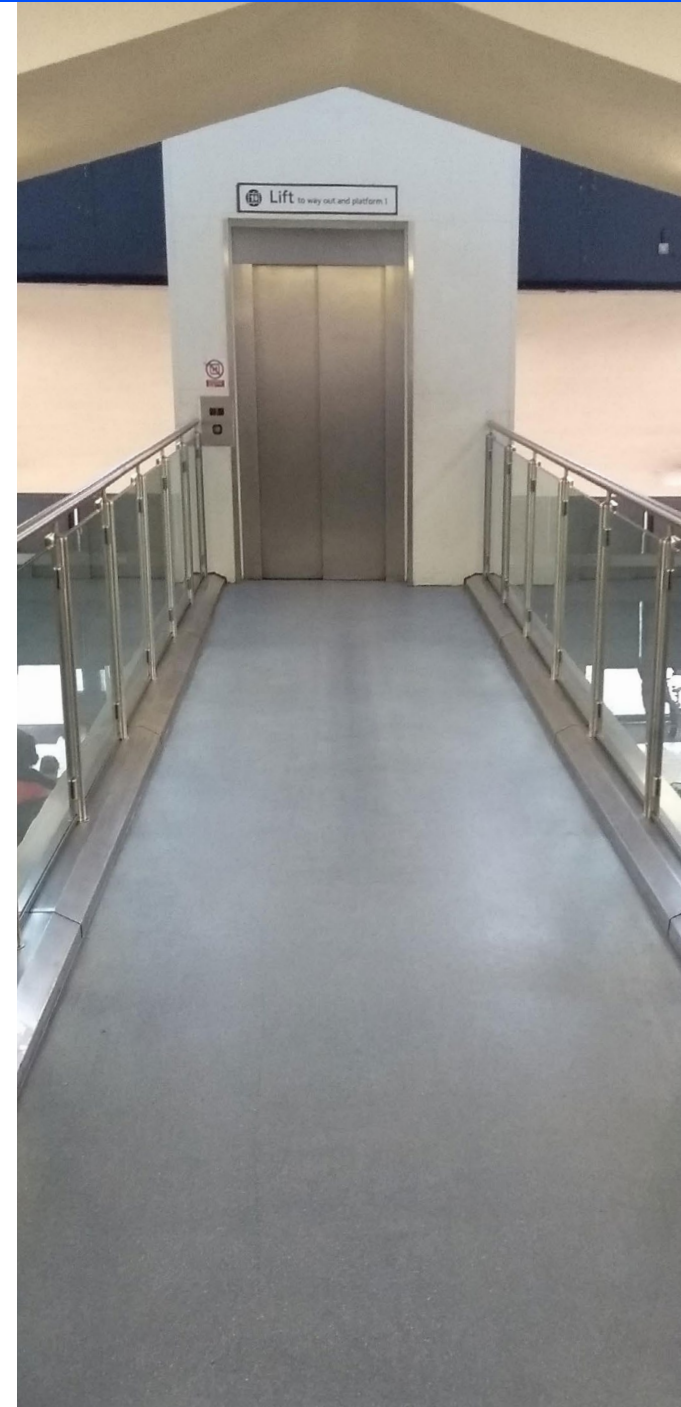


# **TYPICAL INSTALLATION AREAS:**

# MINIMAL DOWNTIME & DISRUPTION

Public Sector facilities are often operational 24/7 and therefore undertaking refurbishments can be challenging. Minimising disruption with the correct products and effective planning is crucial.

- ▶ Two-hour cure time, after which the floor is fully functional.
- ▶ Exceptional bond to concrete, steel, tiles and marine ply means we can overlay existing substrates.
- ▶ Flexible working programmes to minimise downtime.





# LONG-TERM DURABILITY

Durability, performance and longevity are key considerations when choosing floors. Finding a flooring solution that can withstand the high footfall of busy environments and remain fit for purpose can be challenging.

- ▶ Excellent resistance to physical and chemical attack.
- ▶ Exceptional bond to concrete, steel, tiles and marine ply substrates.
- ▶ Maximum strength and durability offers better lifetime value.
- ▶ MMA resins are UV resistant and do not become brittle with age.



# HYGIENIC & SLIP RESISTANT

Achieving and maintaining good hygiene and safety standards are crucial to creating a safe and hygienic environment.

- ▶ Seamless and monolithic floors, reduce risk of bacteria and are easy to clean and maintain.
- ▶ Exceptional bond to substrates reduces delamination to improve hygiene and reduce trip hazards.
- ▶ Excellent slip resistant ratings, even under wet conditions.



# REDUCED MAINTENANCE

Ongoing maintenance costs can drastically increase a products life cycle cost, making them more expensive over time. Maintenance repairs can also disrupt operational processes.

- ▶ Excellent bond to substrates reduces the risk of delamination.
- ▶ Seamless finish reduces weak points and areas that are susceptible to failure such as welded joints or seams.





# COMPREHENSIVE CONSULTATIONS

A clear understanding of your specific circumstances, requirements and priorities is vital to identifying the correct flooring solution.

We provide onsite consultations with experienced advisors to enable us to identify the most suitable product and plan around key challenges prior to installation.

- ▶ Floors that are fit for purpose.
- ▶ Accurate quotations and proposals.
- ▶ Realistic installation programmes.
- ▶ Reduced risks of additional costs and onsite delays.





# AFTERCARE & SUPPORT

At RESYN we place a strong emphasis on our flooring aftercare service to ensure that we maintain and strengthen relationships with our clients and to maximise the longevity and effectiveness of the floor.

- ▶ Cleaning packages.
- ▶ Cleaning advice and support.
- ▶ Onsite cleaning demonstrations.



# TURNKEY FLOORING PACKAGES

Many of our customers prefer the ease of working with one company to coordinate and project manage their schemes. Therefore, RESYN offers comprehensive turnkey solutions. As a result of this, we are able to cater for all flooring and flat roofing requirements including services associated with these works.

Since we take on the responsibility as one package, we can therefore offer seamless delivery and complete projects within specified timeframes.



## TURNKEY FLOORING PACKAGES

RESYN.co.uk

- ▶ Removal and reinstatement of catering equipment.
- ▶ Removal of existing / defective floor finishes.
- ▶ Overlay of existing floor finishes (subject to condition).
- ▶ Subfloor preparation.
- ▶ Reinstatement of subfloor products, including fast curing underlay screeds and repair mortars and WBP Hardwood Marine Ply.
- ▶ Resin flooring solutions.
- ▶ Drainage solutions.
- ▶ Car park area and line marking solutions.
- ▶ Flat roofing solutions.



RESYN have been working with us to replace some of our existing tiled and glazed floors, with resin flooring to our appliance bays. We think the product is exceptional in terms of slip resistance and durability and as it is fast curing, we can quickly get the emergency vehicles and appliances back in the bays.

RESYN have been great since we first approached them. They are always on hand to offer excellent advice and support.

With every job they thoroughly evaluate the project's requirements and deliver a programme to help minimise disruption to the station. We would definitely recommend to anyone looking for a reliable resin flooring contractor.

Julie Smith,  
Operational Support (Premises),  
Lincolnshire Fire & Rescue





Contact us for further information,  
a sample or to discuss a  
possible project or site visit.



01778 343670



info@RESYN.co.uk